

HOME INSPECTION EQUIPMENT CHECKLIST

ESSENTIALS

- Flashlight
- Electrical testers (outlet tester, circuit tester, AFCI/GFCI tester, voltage meter).
- Ladder
- Extra batteries (rechargeable, various sizes, etc.)
- Camera (or smart phone, tablet, etc.)
- Device for running report writing software (tablet, laptop, etc.)
- External storage device for inspection photos and files

PERSONAL PROTECTIVE EQUIPMENT (PPE)

- Coveralls
- Eyewear (Safety glasses, goggles, face shields, etc.)
- Headgear (bump caps, hard hats, etc.)
- Respirator—Prior training needed to ensure safe use
- Gloves
- Padding (Elbow, forearm, knee pads, and/or padded forearm gloves)
- Footwear (Steel-toed, thick soles, rubber, properly fitting, good traction, waterproof, and/or insulated)
- Anti-skid shoe covers

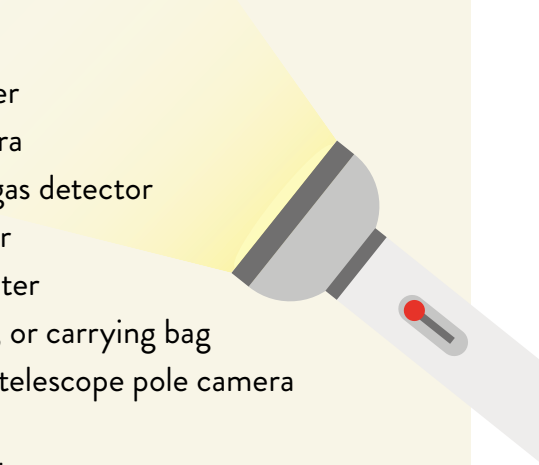
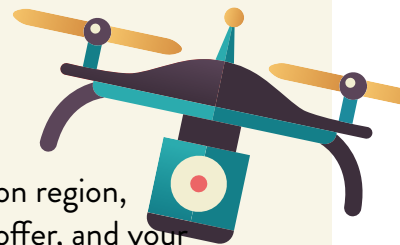
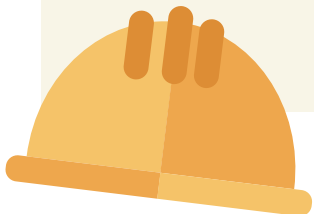
OPTIONAL EQUIPMENT

- Headlamp
- Moisture meter
- Infrared camera
- Combustible gas detector
- Radon monitor
- Microwave tester
- Tool vest, belt, or carrying bag
- Drone and/or telescope pole camera
- Body cam
- Crawlspace robot
- Water pressure gauge
- 360-degree camera
- Telescoping mirror
- Tape measure
- Four-foot level
- Drop cloths

NOTES

Depending on your inspection region, SOP, ancillary services you offer, and your personal preferences, you may find other useful tools not mentioned in this list. Use the space below to add others.

-
-
-
-





DON'T FORGET EQUIPMENT COVERAGE!

Formerly known as inland marine coverage or a commercial property floater, this coverage protects your inspection tools and equipment regardless of where they're located. Most of your home inspection tools are eligible—even your mobile office equipment, like laptops and tablets. If your tools are stolen or broken on the job, equipment coverage reimburses you for their replacement cost.

To get this coverage, you'll need to provide property descriptions (including the make, model, and serial number) for items worth more than a certain amount, like \$1,000. Here at InspectorPro, any items worth less than \$1,000 are often covered as "miscellaneous tools," without providing the make, model, and serial information. However, your miscellaneous tools cannot exceed \$3,000 in total value. Learn more about equipment coverage [here](#).

